

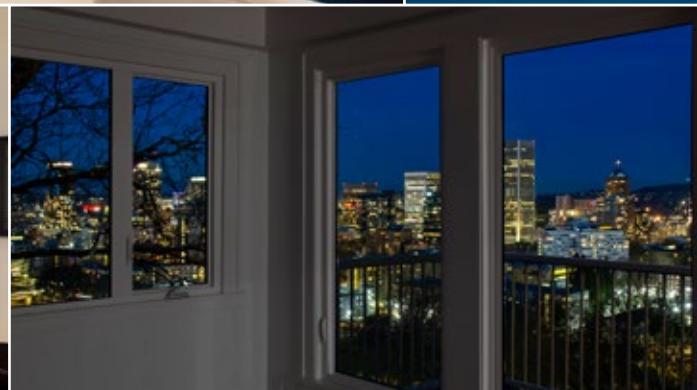


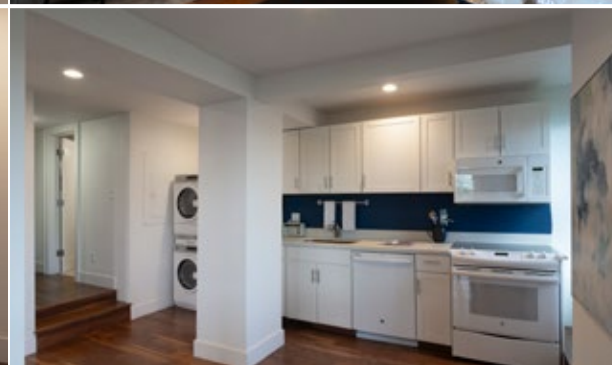
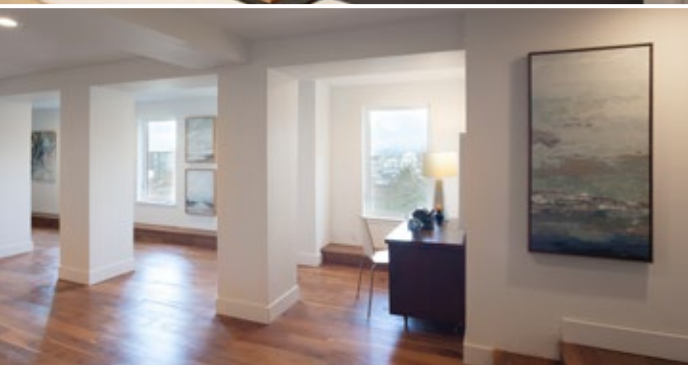
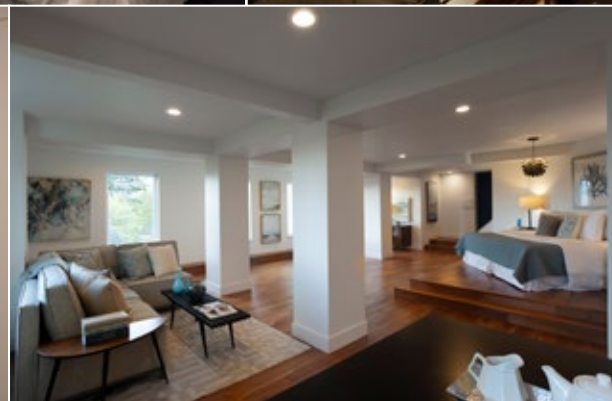
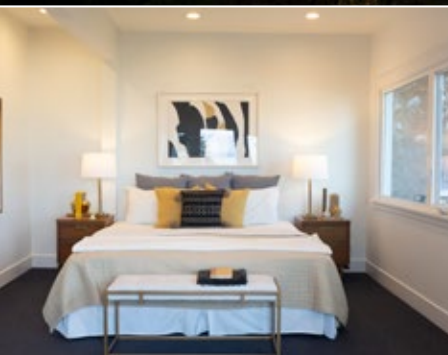
DESCEND THE STAIRS TO REACH THE STARS!

1441 SW COLLEGE
PORTLAND, OR 97201
\$899,000









Dynamic ever-changing city & mountain views are so close you'll feel like you can reach out and touch them! This quiet stretch of SW College St runs the one-way ridge overlooking the City from SW 16th down to SW Cardinell. Direct view to majestic Mt Hood & the sparkling cityscape is as romantic as it gets when night falls.

Architect reimagined and rebuilt turn-of-the-century home w/stylish open-concept interior design, re-engineering the structure incl substantial traditional foundation. Access to this private retreat requires walking down wide stairway to home, but absolutely worth the walk! Two-lot parcel of 8,600 SF enhanced by lush landscape and expansive patio seamlessly extends living space outdoors.

Inside the harmonious floorplan designed for big views features gorgeous black walnut floors on main level, living & dining areas, real cook's spacious dream kitchen with ommercial range, well-appointed prep & eating bar, built-ins & high end appliances. Upstairs enjoy elegant primary suite with full bath, expansive hallway of closets, and romantic private balcony with panoramic City views. Secondary bedroom enjoys big views, plus second full bath. Quiet office area with picturesque private deck, and staircase to attic for art studio or storage. Expansive lower level can be used as separate stylish loft style apartment with kitchen, full bath, and private entrance, or enjoy as remarkable creative space, family room, guest suite, or home office.

This contemporary space is alive with inspiration from the natural light through walls of view windows. Once here you won't want to leave, but rest assured you are only a short distance to Portland's popular PSU Farmer's Market, the Cultural District, and all the City has to offer. Awake to sunrise over Mt Hood each morning, while the peaceful starry nights will cradle you to dreamland. One-of-a-kind creative escape in middle of City for artists of all stripes!



834 SW St. Clair Avenue, Portland, OR 97205 | laurieholland.com

Laurie Holland
Principal Broker
503-242-9000
Text: 503-880-1468
laurie@laurieholland.com

Courtney Holland Sheils
Broker
415-307-7824