

# PRIVATE, TRANQUIL FOREST OASIS WITH 3.77 ACRES JUST MINUTES FROM THE CITY.

841 NW SPRING AVE PORTLAND, OREGON • \$2,500,000



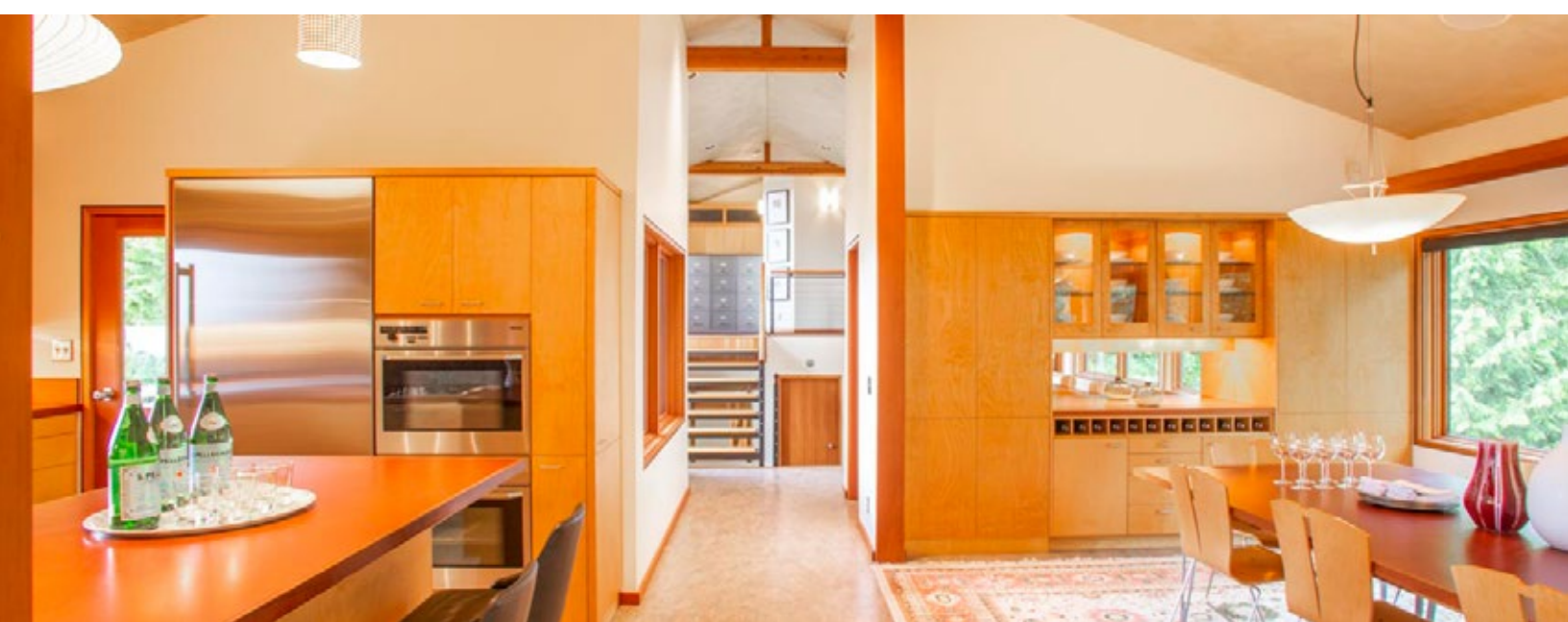












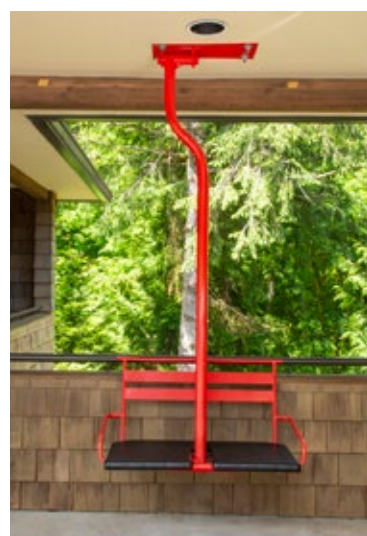
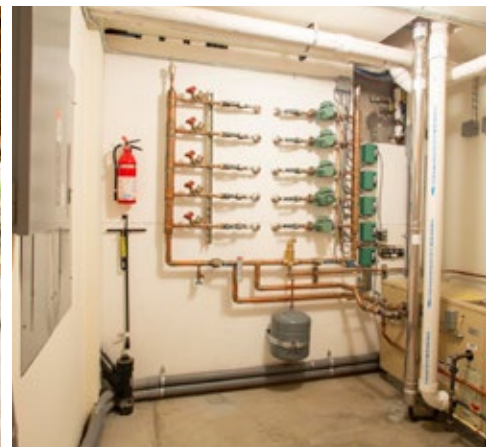
















Just minutes from downtown your own private 3.77 acre arboretum welcomes you home with stunning Mt. Hood and Columbia River views.

A place of privacy, peace and tranquility inspired by a Forest Service lookout, the architects created a timeless structure embracing rustic tradition, highly reflective of the Forest Service philosophy of harmony, utility, and use of natural materials, coupled with engineer-worthy modern technologies, and understated elegance.

The light filled public rooms feature cathedral Venetian plastered ceilings, an open floor plan with dramatic dining/gathering room, a living room floating in the clouds, and two covered outdoor living spaces. One perfect for sunrise over Mt Hood and one with fireplace facing forest for gathering

later in the day. Four bedrooms, three bathrooms, ample spaces for media, game room, offices, & studio space.

A dream for car enthusiasts, through the electric gates, you'll find plenty of space for all your favorite toys, with eight garage and carport spaces and workshops on site. A perfect home filled with spaces for creating, working, entertaining, and escaping to your own sanctuary.

The harmonious interior is thoughtfully designed with attention to every detail. Timeless, casual elegance, a prestige property with room to breathe.

- 4,924 SF
- 4 bedrooms
- 3 bathrooms
- 8 garages/carports
- Workshop/studio space
- Interior cycle room

### Laurie Holland

Principal Broker  
503-242-9000  
Text: 503-880-1468  
laurie@laurieholland.com



### Courtney Holland Sheils

Broker  
415-307-7824

834 SW St. Clair Avenue, Portland, OR 97205 | laurieholland.com

