

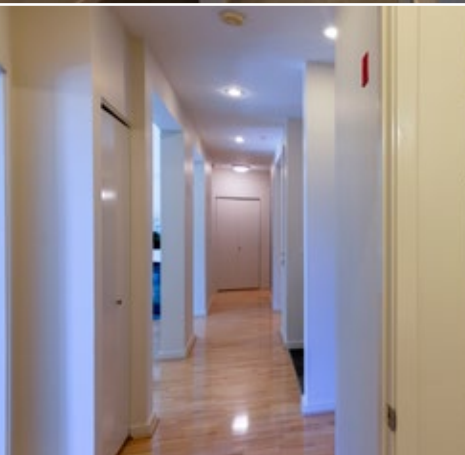


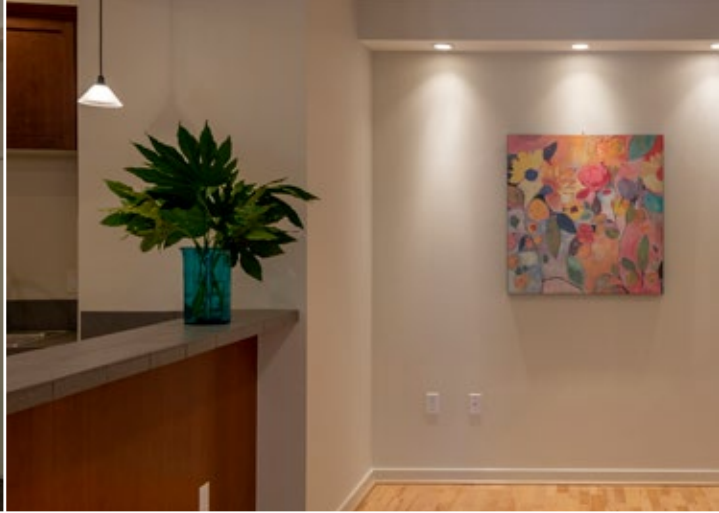
**PENTHOUSE  
IN THE  
PARK**

327 NW PARK AVENUE, PENTHOUSE-EAST, PORTLAND, OR 97209 | \$650,000









For the first time on the market since original ownership, this premiere east facing unique penthouse offers a stunning full width balcony overlooking the park!

This spacious penthouse offers two or three bedrooms, two full baths, dramatic living room & dining room with maple floors as well as three sets of french doors opening to the balcony from the living room and two of the bedrooms.

The living room features a gas fireplace, master suite offers double closets and own bathroom. Walk in laundry utility

room and lots of closet and storage space throughout and forced air heating/cooling.

View of Steel Bridge in the winter. Unique 18-unit building. Enjoy prime Pearl district location near MAX, Portland Streetcar, shops, dining and all the city has to offer! No car needed.

Enjoy this rare penthouse with exceptional privacy, the perfect pied a terre above it all in the NW Park Blocks.

### **Laurie Holland**

Principal Broker | 503-242-9000

Text: 503-880-1468 | [laurie@laurieholland.com](mailto:laurie@laurieholland.com)

### **Courtney Holland Sheils**

Broker | 415-307-7824



834 SW St. Clair Avenue, Portland, OR 97205 | [laurieholland.com](http://laurieholland.com)